

**THOROUGHBRED MOTORSPORTS  
STALLION  
OWNER'S MANUAL**



## Introduction

### CONGRATULATIONS

Congratulations on acquiring your new **STALLION**. Please take the time to get well acquainted with your vehicle by reading this handbook. The more you know and understand about your vehicle, the greater the safety and pleasure you will derive from driving it.

For more information on Thoroughbred Motorsports and its products visit the following website:

- [www.thoroughbred-motorsports.com](http://www.thoroughbred-motorsports.com)

Additional owner information is given in separate publications. This *Owner's Guide* describes every option and model variant available and therefore some of the items covered may not apply to your particular vehicle. Furthermore, due to printing cycles it may describe options before they are generally available.

Remember to pass on this *Owner's Guide* when reselling the vehicle. It is an integral part of the vehicle.

### CALIFORNIA Proposition 65 Warning

**WARNING;** Engine exhaust, some of its constituents, and certain vehicle components contain or emit chemicals known to the State of California to cause cancer and birth defects or other reproductive harm. In addition, certain fluids contained in vehicles and certain products of component, wear contain or emit chemicals known to the State of California to cause cancer and birth defects or other reproductive harm.

## SAFETY AND ENVIRONMENT PROTECTION

### Protecting the environment

We must all play our part in protecting the environment. Correct vehicle usage and the authorized disposal of waste, cleaning and lubrication materials are significant steps towards this aim.

## BREAKING-IN YOUR VEHICLE

Your vehicle does not need an extensive break-in. Try not to drive continuously at the same speed for the first 1,000 miles (1,600 km) of new vehicle operation. Vary your speed frequently in order to give the moving parts a chance to break in.

Do not add friction modifier compounds or special break-in oils since these additives may prevent piston ring seating. See *Engine oil* in the *Maintenance and Specifications* chapter for more information on oil usage.

## Introduction

### SPECIAL NOTICES

#### New Vehicle Limited Warranty

For a detailed description of what is covered and what is not covered by your vehicle's New Vehicle Limited Warranty, refer to the *Warranty Guide* that is provided to you along with your *Owner's Guide*.

#### Service Data Recording

Service data recorders in your vehicle are capable of collecting and storing diagnostic information about your vehicle. This potentially includes information about the performance or status of various systems and modules in the vehicle, such as the engine, throttle, and transmission control systems. In order to properly diagnose and service your vehicle, Thoroughbred Motorsports service and repair facilities may access vehicle diagnostic information through a direct connection to your vehicle when diagnosing or servicing your vehicle.

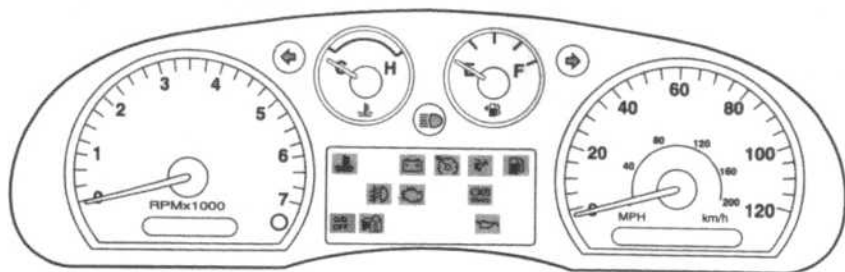
**Cell phone use**

The use of Mobile Communications Equipment has become increasingly important in the conduct of business and personal affairs. However, drivers must not compromise their own or others' safety when using such equipment. Mobile Communications can enhance personal safety and security when appropriately used, particularly in emergency situations. Safety must be paramount when using mobile communications equipment to avoid negating these benefits.

Mobile Communication Equipment includes, but is not limited to cellular phones, pagers, portable e-mail devices, in-vehicle communications systems, telematics devices and portable two-way radios.

## Instrument Cluster

### WARNING LIGHTS AND CHIMES



Warning lights and gauges can alert you to a vehicle condition that may become serious enough to cause expensive repairs. A warning light may illuminate when a problem exists with one of your vehicle's functions. Many lights will illuminate when you start your vehicle to make sure the bulb works. If any light remains on after starting the vehicle, refer to the respective system warning light for additional information.

**Check engine:** The *Check Engine* indicator light illuminates when the ignition is first turned to the ON position to check the bulb. Solid



Illumination after the engine is started indicates the On Board Diagnostics System (OBD-II) has detected a malfunction. Refer To *On board diagnostics (OBD-II)* in the *Maintenance and Specifications* chapter. If the light is blinking, engine misfire is occurring which could damage your catalytic converter. Drive in a moderate fashion (avoid heavy acceleration and deceleration) and have your vehicle serviced immediately by your authorized dealer.

**Check fuel cap:** Illuminates when the fuel cap may not be properly installed. Continued driving with this light on may cause the Check Engine warning light to come on.



It may take a long period of time for the system to detect an improperly installed or properly re-installed fuel filler cap depending on driving and fuel tank level conditions. Refer to *Fuel filler cap* in the *Maintenance and Specifications* chapter.

**Brake system warning light:** To confirm the brake system warning light is functional, it will momentarily illuminate when the ignition is turned to the ON position when the engine is not running, or in a position between ON and START, or by applying the parking brake when the ignition is turned to the ON position. If the brake system warning light does not illuminate at this time, seek service immediately from your authorized dealer. Illumination after releasing the parking brake indicates low brake fluid level or a brake proportioning failure and the brake system should be inspected immediately by your authorized dealer.



**Charging system:** Illuminates when the battery is not charging properly.



**Engine oil pressure:** Illuminates when the oil pressure falls below the normal range, refer to *Engine oil* in the *Maintenance and Specifications* chapter.



**Engine coolant:** Illuminates when the engine coolant temperature is high.



Stop the vehicle as soon as possible; switch off the engine and let cool. Refer to *Engine coolant* in the *Maintenance and Specifications* chapter.

## Instrument Cluster

**Fog lamps:** Illuminates when the fog lamps are turned on. Refer to *Fog lamp control* in the *Lights* chapter.



**Low fuel:** Illuminates when the fuel level in the fuel tank is at or near empty (refer to *Fuel gauge* in this chapter).



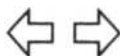
**Anti-theft system:** Flashes when the SecuriLock Passive Anti-theft System has been activated.



**Speed control:** Illuminates when the speed control is engaged. Turns off when the speed control system is disengaged.



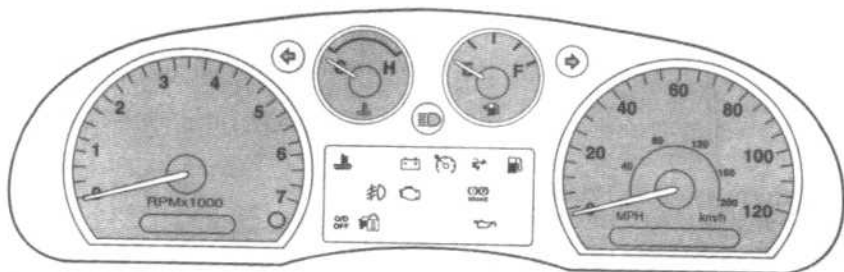
**Turn signal:** Illuminates when the left turn signal, right turn signal, or hazard lights are turned on. If the indicators stay on or flash faster than normal, check for a burned bulb.



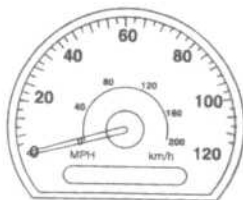
**High beams:** Illuminates when the high beam headlamps are turned on.



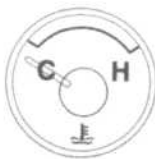
## GAUGES



**Speedometer:** Indicates the current vehicle speed.



**Engine coolant temperature gauge:** Indicates engine coolant temperature. At normal operating temperature, the needle will be in the normal range (between "H" and "C"). If it enters the red section, the engine is overheating. Stop the vehicle as soon as safely possible, switch off the engine and let the engine cool.

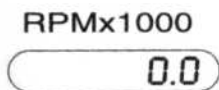


**Odometer:** Registers the total miles (kilometers) of the vehicle.



## Instrument Cluster

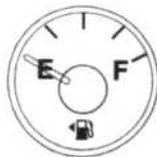
**Trip odometer:** Registers the miles (kilometers) of individual journeys. Press the button once until "TRIP" appears in the display (this represents the trip mode). To reset the trip, press and hold the control again for approximately 2 seconds, until the trip reading is 0.0 miles (kilometers). To toggle between trip and odometer, press and release the control.



**Tachometer:** indicates the engine speed in revolutions per minute. Driving with your tachometer pointer continuously at the top of the scale may damage the engine.



**Fuel gauge:** Indicates approximately how much fuel is left in the fuel tank (when the ignition is in the ON position). The fuel gauge may vary slightly when the vehicle is in motion or on a grade.



Proper gauge indication requires the ignition to be in the OFF or ACCESSORY position during refueling, otherwise correct fuel indication after refueling can be slow to update. Also, a minimum of 3 gallons is needed for correct indication after refueling.

Refer to *Filling the tank* in the *Maintenance and Specifications* chapter for more information.